



MASON INDUSTRIES, Inc.

Manufacturers of Vibration Control Products

350 Rabro Drive
Hauppauge, NY 11788
631/348-0282
FAX 631/348-0279
Info@Mason-Ind.com
www.Mason-Ind.com

2101 W. Crescent Ave., Suite D
Anaheim, CA 92801
714/535-2727
FAX 714/535-5738
Info@MasonAnaheim.com
www.MasonAnaheim.com

1"(25mm) and Page 2, 2"(51mm)

DEFLECTION RESTRAINED SEISMIC SPRING MOUNTS with or without EXTENDED BASE PLATES

TYPE

SLRS

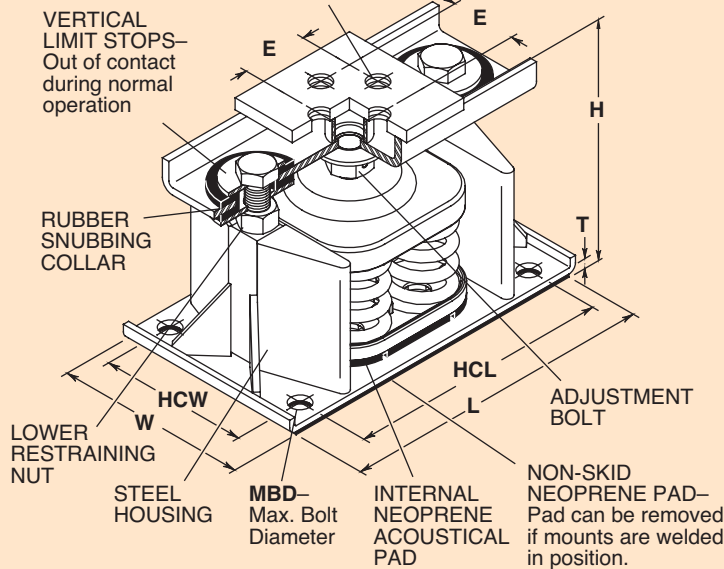
DATA SHEET DS-224-1

1"25mm Deflection SLRS SPRING MOUNTS

Use SLRSEBP when Extended Base Plate is required.

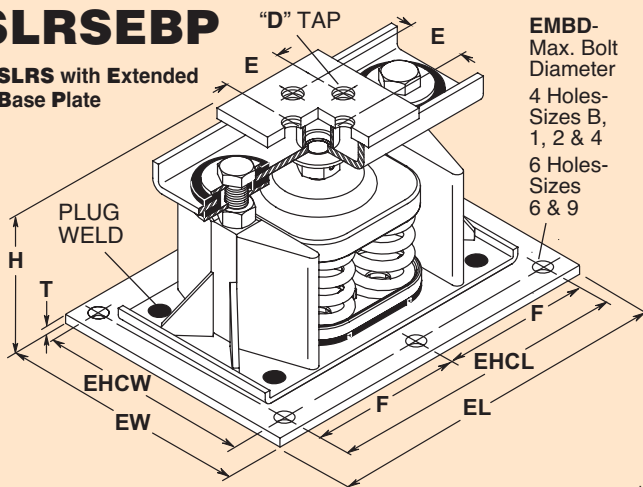
SLRS

"D" TAP- 4 Holes unless otherwise requested

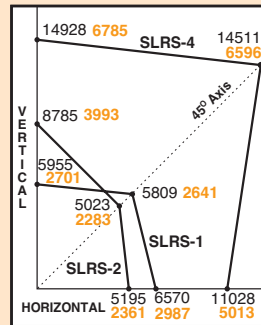


SLRSEBP

SLRS with Extended Base Plate



OSHDP OPA-194 Rated Load Curves (lbs kg)



Horizontal, Vertical and 45° plotted Ratings are California OSHDP approved values having the OSHDP Anchorage Preapproval Number OPA-0194. Testing and calculations were performed to meet OSHDP criteria.

To use approved OSHDP rated load curves:

- 1) Calculate Vertical and Horizontal Forces on mountings including translations and overturning moments.
- 2) Plot Horizontal and Vertical Loads. The intersection must fall within the area below the OSHDP curve.

TYPE SLRS & SLRSEBP RATINGS

SLRS or SLRSEBP Size	Rated Capacity (lbs) (kg)	Rated Defl (in) (mm)	Mount Constant (lbs/in)(kg/mm)	Max. G Rating	Spring Color
B-65	65 29	2.10 53	31 0.55	24.6	Brown
B-85	85 39	2.10 53	40 0.74	18.9	White [†]
B-115	115 52	2.00 51	57 1.02	13.9	Silver
B-150	150 68	2.00 51	75 1.33	10.6	Orange
B-280	280 127	1.60 41	174 3.10	5.7	Green
B-450	450 204	1.31 33	344 6.18	3.5	Red
B-750	750 340	1.12 28	670 12.1	2.1	White
B-1000	1000 454	1.00 25	1000 18.2	1.6	Blue
1-1000	1000 454	1.00 25	1000 18.2	6.0	Black
1-1350	1350 612	1.00 25	1350 24.5	4.4	Yellow
1-1750	1750 794	1.00 25	1750 31.8	3.4	Black*
1-2100	2100 953	1.00 25	2100 38.1	2.8	Yellow
1-2385	2385 1082	1.00 25	2385 43.3	2.5	Yellow**
1-2650	2650 1202	1.00 25	2650 48.1	2.3	Red*
1-2935	2935 1331	1.00 25	2935 53.2	2.0	Red**
2-3500	3500 1588	1.00 25	3500 63.5	1.5	Black*
2-4200	4200 1905	1.00 25	4200 76.2	1.2	Yellow*
2-4770	4770 2164	1.00 25	4770 86.6	1.1	Yellow**
4-5400	5400 2449	1.00 25	5400 98.0	2.0	Yellow
4-7000	7000 3175	1.00 25	7000 127.0	1.6	Black*
4-8400	8400 3810	1.00 25	8400 152.4	1.3	Yellow*
4-9540	9540 4327	1.00 25	9540 173.1	1.2	Yellow**
4-10600	10600 4808	1.00 25	10600 192.3	1.1	Red*
4-11740	11740 5325	1.00 25	11740 213.0	0.9	Red**
6-12600	12600 5715	1.00 25	12600 228.6	1.5	Yellow*
6-14310	14310 6491	1.00 25	14310 259.6	1.4	Yellow**
6-15900	15900 7212	1.00 25	15900 288.5	1.2	Red*
6-17610	17610 7988	1.00 25	17610 319.5	1.1	Red**
9-18900	18900 8573	1.00 25	18900 342.9	1.4	Yellow*
9-21465	21465 9736	1.00 25	21465 389.4	1.2	Yellow**
9-23850	23850 10818	1.00 25	23850 432.7	1.1	Red*

[†]with Black stripe

*with Red inner spring

**with Green inner spring

SPRING CHARACTERISTICS (inches and mm)

Spring Size	OD	Free Height	Ratio Kx/Ky	Ratio OD/OH
B	23/8 60	4 102	0.70-0.80	0.80
C	27/8 73	4 105	0.90-1.10	0.92

All springs have an additional travel to solid equal to 50% of the rated deflection.

Solid Spring Height = Free Height minus 1.5 times the Rated Deflection.

Designs using these mounts to resist wind loads must be in accordance with ASCE 7-02. Housing load ratings expressed in G's are based on tests with bolted connections to steel top and bottom. SLRS housings require uniform support under entire base plate.

TYPE SLRS & SLRSEBP DIMENSIONS (inches and mm)

Size	SLRS					SLRSEBP				
	H	T	D	E	L	HCL	W	HCW	MBD	EL
B	81/2 216	3/8 10	1/2 13	21/4 58	81/2 216	7 178	41/4 108	23/4 70	5/8 16	10 254
1	81/2 216	3/8 10	5/8 16	23/4 70	91/2 241	71/2 191	51/4 133	31/2 89	5/8 16	10 254
2	81/2 216	3/8 10	5/8 16	23/4 70	14 356	121/4 311	51/4 133	31/2 89	5/8 16	14 356
4	81/2 216	3/8 10	7/8 22	23/4 70	13 330	11 279	83/8 213	61/4 159	3/4 19	17 432
6	9 229	1/2 13	1 25	31/4 82	161/2 419	14 356	83/8 213	6 152	1 25	27 686
9	93/4 248	5/8 16	1 25	4 102	17 432	143/4 375	13 330	103/4 273	1 25	27 686

2"51mm Deflection SLRS SPRING MOUNTS

Use SLRSEBP when Extended Base Plate is required.

SLRS

See front page for
OSHDP Rated
Load Curves



"D" TAP- 4 Holes unless
otherwise requested

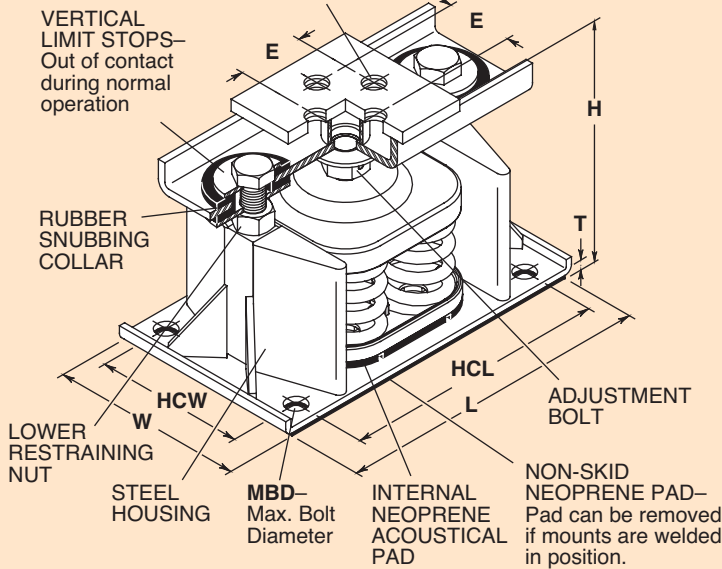
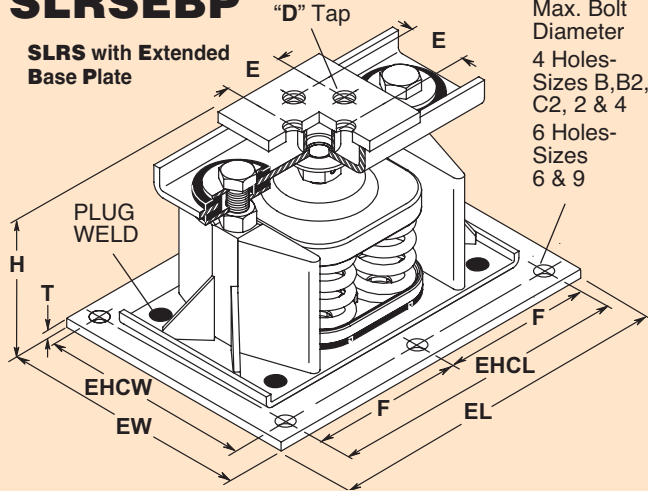


Illustration above shows a SLRS-4-C2 (4 springs). SLRS-B, -B2 & -C2 have one spring, SLRS-2-C2 has two springs, SLRS-6-C2 has six springs and SLRS-9-C2 has nine springs.

SLRSEBP

SLRS with Extended
Base Plate



EMBD-
Max. Bolt
Diameter
4 Holes-
Sizes B,B2,
C2, 2 & 4
6 Holes-
Sizes
6 & 9

TYPE SLRS DIMENSIONS (inches and mm)

Size	SLRS					SLRSEBP				
	H	T	D	E	L	HCL	W	HCW	MBD	EL
B	8 1/2 216	3/8 10	1/2 13	2 1/4 58	8 1/2 216	7 178	4 1/4 108	23/4 70	5/8 16	10 254
B2	8 1/2 216	3/8 10	5/8 16	23/4 70	9 1/2 241	7 1/2 191	5 1/4 133	3 1/2 89	5/8 16	10 254
C2	8 1/2 216	3/8 10	5/8 16	23/4 70	14 356	12 1/4 311	5 1/4 133	3 1/2 89	5/8 16	14 356
2-C2	8 1/2 216	3/8 10	5/8 16	23/4 70	13 330	11 279	8 3/8 213	6 1/4 159	3/4 19	17 432
4-C2	8 1/2 216	3/8 10	7/8 22	23/4 70	16 1/2 419	14 356	8 3/8 213	6 152	1 25	27 686
6-C2	9 229	1/2 13	1 25	3 1/4 82	17 432	14 3/4 375	13 330	10 3/4 273	1 25	27 686
9-C2	9 3/4 216	5/8 16	1 25	4 102	17 432	14 3/4 375	13 330	10 3/4 273	1 25	27 686

TYPE SLRS & SLRSEBP RATINGS

SLRS or SLRSEBP Size	Rated Capacity (lbs)(kg)	Rated Defl (in)(mm)	Mount Constant (lbs/in)(kg/mm)	Max. G Rating	Spring Color
B-20	20	9	2.40 61	8 0.15	80.0 Tan
B-26	26	12	2.18 55	12 0.22	61.5 Wht/Blue
B-35	35	16	2.20 56	16 0.29	45.7 Purple
B-50	50	23	2.20 56	24 0.41	32.0 Wht/Red
B-65	65	29	2.10 53	31 0.55	24.6 Brown
B-85	85	39	2.10 53	40 0.74	18.8 Wht/Blk
B-115	115	52	2.00 51	57 1.02	13.9 Silver
B-150	150	68	2.00 51	75 1.33	10.7 Orange
B2-210	210	95	2.12 54	99 1.76	7.6 Silver
B2-290	290	132	2.00 51	144 2.59	5.5 Blue
B2-450 [†]	450	204	2.00 51	224 4.00	3.6 Tan
B2-680 [†]	680	308	2.00 51	340 6.04	2.4 Gray
C2-125	125	57	2.50 64	50 0.89	48.0 Purple
C2-170	170	77	2.40 61	70 1.26	35.0 Brown
C2-210	210	95	2.30 58	90 1.64	28.3 Red
C2-260	260	118	2.20 56	120 2.11	23.0 White
C2-330	330	150	2.00 51	165 2.94	18.0 Black
C2-460	460	209	2.00 51	230 4.10	13.0 Blue
C2-610	610	277	2.00 51	305 5.43	9.8 Green
C2-880 [†]	880	399	2.00 51	440 7.82	6.8 Gray
C2-1210 [†]	1210	549	2.00 51	605 10.8	4.9 Silver
C2-1540 [†]	1540	699	2.00 51	770 13.7	3.9 Gray*
C2-1870 [†]	1870	848	2.00 51	935 16.6	3.2 Silver*
2-C2-340	340	154	2.40 61	140 2.52	15.3 Brown
2-C2-420	420	191	2.30 58	180 3.29	12.4 Red
2-C2-520	520	236	2.20 56	240 4.21	10.0 White
2-C2-660	660	299	2.00 51	330 5.86	7.9 Black
2-C2-920	920	417	2.00 51	460 8.18	5.7 Blue
2-C2-1220	1220	553	2.00 51	610 10.8	4.3 Green
2-C2-1760 [†]	1760	798	2.00 51	880 15.7	3.0 Gray
2-C2-2420 [†]	2420	1098	2.00 51	1210 21.5	2.2 Silver
2-C2-3080 [†]	3080	1397	2.00 51	1540 27.4	1.7 Gray*
2-C2-3740 [†]	3740	1696	2.00 51	1870 33.2	1.4 Silver*
4-C2-4840 [†]	4840	2195	2.00 51	2420 43.0	2.3 Silver
4-C2-6160 [†]	6160	2794	2.00 51	3080 54.8	1.8 Gray*
4-C2-7480 [†]	7480	3393	2.00 51	3740 66.5	1.5 Silver*
6-C2-7260 [†]	7260	3293	2.00 51	3630 64.6	2.7 Silver
6-C2-9240 [†]	9240	4191	2.00 51	4620 82.2	2.1 Gray*
6-C2-11220 [†]	11220	5089	2.00 51	5610 99.8	1.7 Silver*
9-C2-13860 [†]	13860	6287	2.00 51	6930 123.2	1.9 Gray*
9-C2-16830 [†]	16830	7634	2.00 51	8415 149.7	1.6 Silver*

*with Red inner spring

[†]Published ratings allow minimum 25% additional travel to solid.
For a full 50% specified minimum use the following ratings:

Size	Derated Capacity (lbs)(kg)	Defl. (in)(mm)	Size	Derated Capacity (lbs)(kg)	Defl. (in)(mm)
B2-450	410 186	1.83 46	2-C2-3740	3120 1415	1.67 42
B2-680	565 256	1.67 42	4-C2-4840	4040 1833	1.67 42
C2-880	800 363	1.82 46	4-C2-6160	5145 2334	1.67 42
C2-1210	1010 458	1.67 42	4-C2-7480	6245 2833	1.67 42
C2-1540	1285 583	1.67 42	6-C2-7260	6060 2749	1.67 42
C2-1870	1560 708	1.67 42	6-C2-9240	7715 3500	1.67 42
2-C2-1760	1600 726	1.67 42	6-C2-11220	9370 4250	1.67 42
2-C2-2420	2020 916	1.67 42	9-C2-13860	11570 5248	1.67 42
2-C2-3080	2570 1166	1.67 42	9-C2-16830	14050 6373	1.67 42

SPRING CHARACTERISTICS (inches and mm)

Spring Size	OD	Free Height	Ratio Kx/Ky	Ratio OD/OH
B	23/8 60	4 102	0.55-0.65	0.95-1.00
B2	23/8 60	4 1/2 114	0.80-0.90	1.19-1.48
C2	27/8 73	5 127	0.63-0.85	0.96-1.15

All springs without "†" have additional travel to solid equal to 50% of the rated deflection.

All springs with "†" have additional travel to solid equal to 25% of the rated deflection.

Designs using these mounts to resist wind loads must be in accordance with ASCE 7-02.

Solid Spring Height = Free Height minus 1.5 times the Rated Deflection.

Housing load ratings expressed in G's are based on tests with bolted connections to steel top and bottom. SLRS housings require uniform support under entire base plate.